



Universal Print Driver

A **SMART** fleet driver
provides the CHOICE and
MANAGEABILITY you need



Manage your printing environment efficiently with the HP Universal Print Driver, a driver trusted by users worldwide. Driver management is made simple with HP's fleet driver solution and management tools, which offer an abundance of options to perfectly fit your unique business needs.

The world is changing

Today's work environment is profoundly different from even a few years ago. As workers become less tethered to permanent workspaces, the workforce is becoming more mobile. They require quick access to their applications, data, and the web, and they must be able to print anytime and anywhere.

In an increasingly competitive world, enterprises need tools to help them meet important business objectives. More than ever, companies are asking their IT teams to broadly implement print policies that cut costs, improve security, and meet environmental initiatives.

And finally, businesses now expect world-class productivity at the best cost. Your IT team is required to efficiently handle migrating to new devices, implementing new technologies, updating operating systems, virtualizing environments, controlling security, and more. You're looking for smart solutions that can take cost out while delivering exceptional end-user effectiveness.

A proven solution helps you get more done

Since 2006, thousands of businesses and millions of users worldwide have used the HP Universal Print Driver (UPD) to make printing easier across a changing landscape. HP UPD provides a fleet driver for both traditional and mobile users, and offers exceptional ease of use. With its flexibility and suite of management tools, the UPD can be fully managed to help you deploy core printing, implement business-driven policies, and increase user productivity.



www.ads-s.com

Download this free software and learn more at www.hp.com/go/upd

Choose the mode that best fits your **UNIQUE** printing environment.

Use the HP UPD in a variety of ways

The HP UPD is an intelligent print driver that was designed to give you control of how to best deploy it for your environment, whether you want to maintain a traditional print infrastructure or explore how to better connect users with printers in a changing environment. Its two user modes give you a choice:

- **Traditional Mode** allows you to deploy the UPD as a classic Windows® print driver, simulating a traditional print environment. It is highly suited for print server deployments where it can be deployed through Point-and-Print, Citrix, or standard Windows print queues.
- **Dynamic Mode** allows users to be more self-sufficient by letting them search for and connect to printers and MFPs on-the-go. End-users can choose to permanently install an instance of a discovered printer, making it a simple installation tool as well. And coupled with HP's management tools, you can customize printer lists and maps to simplify the discovery of devices.

Both modes can be deployed either through a print server/print share or through direct IP. And you can count on compatibility—the UPD is available in PCL5, PCL6, and PS, and supports all current Windows client and server operating systems (32-bit and 64-bit) as well as Novell and Citrix.

ONE DRIVER, LOTS OF FLEXIBILITY

Traditional Mode

Good for:

- Server installations
- Minimizing disruption to users and IT workflows



Print server

(can also be deployed via direct IP)



In **Traditional Mode**, the UPD appears as a classic Windows print driver, providing users with a familiar way to connect to devices.

Benefits:

- Reduced number of drivers
- Maintains existing processes

Dynamic Mode

Good for:

- Mobile users
- Keeping users connected to printers as they get new PCs or move to new work locations



Direct IP

(can also be deployed via print share)



In **Dynamic Mode**, users can self-sufficiently use the UPD to find, install, and print to devices.

Benefits:

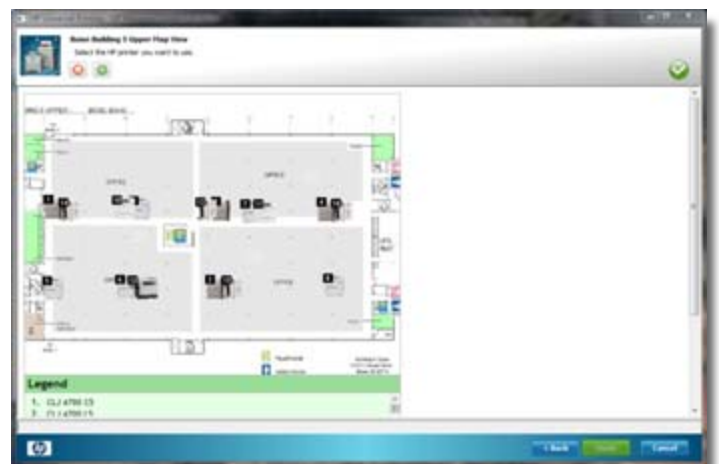
- One driver per user
- Removes cost of operating print servers

A number of **FREE** tools and capabilities help you **FULLY MANAGE** the HP Universal Print Driver.

Expand the capability and usefulness of the HP UPD with a suite of free tools designed to work seamlessly with the driver. You can customize the way you install, deploy, configure, and manage the UPD solution to fit your unique printing environment. And now, the HP Printer Administrator's Resource Kit collects all of these tools, scripts, and documentation in a single download package—see the **Documentation** tab at www.hp.com/go/upd.

Category	Tool	Description
Driver settings	Driver Configuration Utility (DCU)	Pre-configure driver settings and shortcuts before installing the UPD on users' computers. You can set defaults for nearly every feature and can even lock certain features.
Installation	Driver Deployment Utility (DDU)	Easily create an installation package to distribute to end-users via your standard software distribution methods. It can be used with the included DCU for pre-configuration.
Policies	Driver Configuration Utility (DCU)	Pre-configure driver settings such as "Duplex on" or "Print grayscale" before installing the UPD on users' computers.
	Managed Print Administration (MPA)	Implement print policies (such as color access by application and time of day) that can be applied across users.
	Active Directory Templates	Templates make it easy for you to use your existing Active Directory Service to implement print policies, such as color access by application and time of day.
Printer lists	Managed Print Administration (MPA)	Create customized printer lists or printer maps that can be made available to end-users through the Dynamic Mode UPD.

DYNAMIC MODE and printer maps help users find the device they want.



The HP UPD has helped countless businesses **IMPROVE THE PERFORMANCE** of their printing ecosystem while saving time and controlling costs.

The HP Universal Print Driver can be deployed in a wide variety of ways, providing the flexibility to meet your specific needs. Here are two examples of how the UPD can help boost productivity.

Complex management made simple



Situation: A large global enterprise deploying product-specific drivers via print servers

The XYZ Corporation has over 20,000 employees across multiple campuses, many of whom often work from home. Their chaotic print ecosystem includes 75 model-specific print drivers, 3,500 print queues, three to four print drivers per user, and 85 print servers. A lack of global policies along with inconsistent user interfaces and feature sets result in redundancies and major hassles for users and IT alike.

Solution: UPD in Dynamic Mode with direct IP, using MPA for policies

XYZ deploys the HP Universal Print Driver throughout the enterprise, setting it up in Dynamic mode with direct IP connection so workers can easily find printers wherever they are. Using Managed Print Administration, IT sets policies to limit color printing and make two-sided printing the default.

Benefits: XYZ finds that with one driver per user and no print servers, the company's workers are self-sufficient for everyday printing. The company captures real savings by removing print servers and enabling their employees to stay connected, whether they are on the go, setting up a new PC, or moving to a new work location.

More efficiency and global policies with little disruption



Situation: A small, managed business that has too many print drivers and wants to be more green

ABC Financial Services wants its several hundred employees to focus on business and not on learning new print solutions. In general, printing is working well, but they would like fewer drivers and they don't have a good way to implement their green print initiatives.

Solution: UPD in Traditional Mode with existing print servers, using DCU for policies

ABC sets up the HP UPD in Traditional mode, keeps their current print servers, and uses HP's Driver Configuration Utility (DCU) to set two-sided printing as the default for every user. Workers continue to connect and print as they always have, but now automatic duplex printing makes it easy to save supplies and paper (duplex printing is the default, but can be changed job by job).

Benefits: ABC's employees appreciate the familiar user interface and deployment processes of the UPD's Traditional Mode, while their IT team enjoys streamlined driver deployments through faster queue creation, improved print stability with just a few instances of the driver to manage, and easy implementation of green policies through pre-configured drivers.

Many scenarios, one solution: HP UPD

For more information about HP UPD and how its suite of tools and capabilities can benefit your unique printing environment, visit www.hp.com/go/upd.

© Copyright 2010 Hewlett-Packard Development Company, L.P.

The information contained herein is subject to change without notice. The only warranties for HP products and services are set forth in the express warranty statements accompanying such products and services. Nothing herein should be construed as constituting an additional warranty. HP shall not be liable for technical or editorial errors or omissions contained herein.

Windows is a U.S. registered trademark of Microsoft Corporation.

To learn more, visit www.hp.com

4AA3-0640ENW, Rev. 1, September 2010

