



SET AND ACHIEVE
GOALS
FOR YOUR **BUSINESS**
AND THE **ENVIRONMENT**



HP EcoSMART Fleet

EVERYTHING YOU NEED TO KNOW TO OPTIMIZE YOUR FLEET FOR YOUR
BUSINESS AND THE ENVIRONMENT—ALL IN ONE SPOT.



HIT **PRINT**
RESPONSIBLY



With HP EcoSMART Fleet, get powerful enterprise environmental assessment, management, and reporting for your HP imaging and printing devices. From one intuitive, easy-to-use interface, you can see your energy and resource use and how to adjust your habits and settings to do what's right for the environment and your business.

See the environmental landscape for your entire HP fleet

Successful enterprise businesses have always looked for ways to cut costs. Today, most enterprises are also seeing the value of introducing environmental programs and initiatives that both reduce their overall costs and help them engage in sustainable practices. For imaging and printing fleet administrators, this often results in management requesting a certain reduction in both costs and environmental impact. To accomplish this, print administrators need to understand their current situation, identify where changes could be made, and see how to implement those changes in a way that's both good for the environment and the business.

To address these challenges, HP introduces the new HP EcoSMART Fleet, which provides real-time feedback and helpful reports based on your HP Web Jetadmin imaging and printing fleet management software data. From a single, intuitive interface, HP EcoSMART Fleet shows your current imaging and printing situation at a glance. Businesses can reduce costs up to 30% and save up to 80% on energy usage in managed print operations through focused management of their printing and imaging environment.

HP EcoSMART Fleet gives you the information you need to effectively monitor, manage, and control the environmental impact of your fleet. Use real-time data collection to run scenarios to study—and capitalize on—the functions within your printing devices that control energy, carbon footprint, and paper savings. Run straightforward reports for forecasting and detailing environmental improvements and efficiencies to meet and monitor environmental goals.

Monitor trends and run scenarios for an optimized environment

HP EcoSMART Fleet works by collecting data from HP Web Jetadmin software and the HP Carbon Footprint Calculator. From this data, real-time status overviews are displayed in an intelligent graphical user interface. You can run scenarios to understand how limiting energy and carbon usage, as well as spending, might impact productivity. Run trend reports by user-defined time periods, including by month, week, quarter, and year. It's easy to see your consumption over time, identify high-consuming devices, and pinpoint opportunities for savings.

A variety of detailed trending, current status, scenario, and cost-savings reports are available. Report on individual devices, device groups, or your entire fleet. Reports can be produced in PDF or XML format, which means they integrate well with industry-standard reporting tools and let you easily apply changes in HP Web Jetadmin.

With the reports you can quickly locate high energy and carbon-usage legacy devices, so that they can be replaced with new energy-efficient HP devices. Or target high-consumption, standalone printers, scanners, and fax machines for replacement with HP LaserJet print devices that can help reduce your impact on the environment.

HP EcoSMART Fleet gives you the information you need to meet the needs of employees while responding to your business's environmental initiatives. For example, reports could reveal that the call center frequently prints single-sided pages. In response, you could deploy the HP Universal Print driver for call center printers and configure two-sided printing as the default setting.

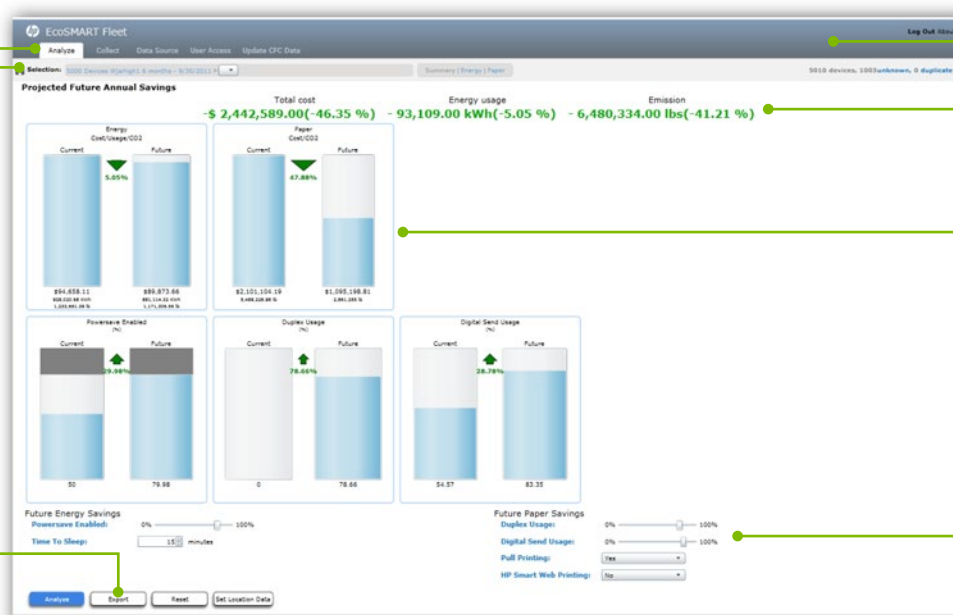
Overall, HP EcoSMART Fleet is designed to help imaging and printing administrators understand their fleet through the lens of environmental impact, so that they can confidently make decisions that can help make a difference for your business—and the environment—for years to come.

HP EcoSMART Fleet dashboard user interface

One dashboard for running real-time scenarios for your imaging and printing fleet's environmental usage

Drill down to fleet, HP Web Jetadmin instance or group levels

Simple PDF or XML reporting



- Common, easy to use, HP EcoSMART user interface

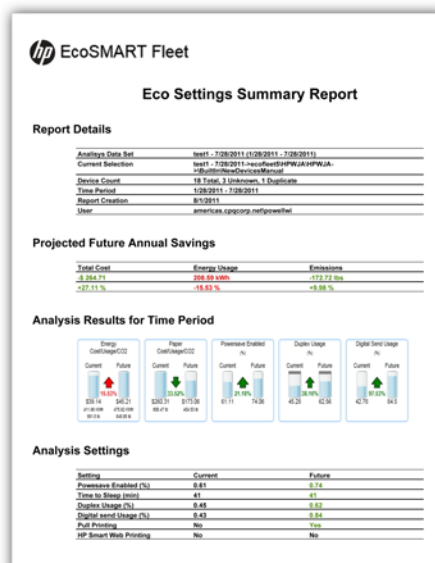
- Get a quick overview of how environmental savings are balanced with device performance

- Carbon, power and paper usage information

- Forecast the environmental savings and business impacts of device settings changes

HP EcoSMART Fleet reports

Summary pages
provide an overview
of your imaging and
printing current eco-
status and forecast
results



Energy and carbon details pages feature all captured device data by group and easily export to industry-standard reporting tools

HP - EcoSMART Fleet

Energy Details Report

| Display Name | IP Address | License Version | Processor Features | Processor Capacity | Processor Utilization | Temp in Range |
|-----------------------|---------------|-----------------|--------------------|--------------------|-----------------------|---------------|
| HP LaserJet MFP E7755 | 25.10.103.104 | Yes | Yes | Yes | Yes | Yes |
| HP LaserJet MFP E7755 | 25.10.103.105 | Yes | Yes | Yes | Yes | Yes |
| HP LaserJet MFP E7755 | 25.10.103.106 | Yes | Yes | Yes | Yes | Yes |
| HP LaserJet MFP E7755 | 25.10.103.107 | Yes | Yes | Yes | Yes | Yes |
| HP LaserJet MFP E7755 | 25.10.103.108 | Yes | Yes | Yes | Yes | Yes |
| HP LaserJet MFP E7755 | 25.10.103.109 | Yes | Yes | Yes | Yes | Yes |
| HP LaserJet MFP E7755 | 25.10.103.110 | Yes | Yes | Yes | Yes | Yes |
| HP LaserJet MFP E7755 | 25.10.103.111 | Yes | Yes | Yes | Yes | Yes |
| HP LaserJet MFP E7755 | 25.10.103.112 | Yes | Yes | Yes | Yes | Yes |
| HP LaserJet MFP E7755 | 25.10.103.113 | Yes | Yes | Yes | Yes | Yes |
| HP LaserJet MFP E7755 | 25.10.103.114 | Yes | Yes | Yes | Yes | Yes |
| HP LaserJet MFP E7755 | 25.10.103.115 | Yes | Yes | Yes | Yes | Yes |
| HP LaserJet MFP E7755 | 25.10.103.116 | Yes | Yes | Yes | Yes | Yes |
| HP LaserJet MFP E7755 | 25.10.103.117 | Yes | Yes | Yes | Yes | Yes |
| HP LaserJet MFP E7755 | 25.10.103.118 | Yes | Yes | Yes | Yes | Yes |
| HP LaserJet MFP E7755 | 25.10.103.119 | Yes | Yes | Yes | Yes | Yes |
| HP LaserJet MFP E7755 | 25.10.103.120 | Yes | Yes | Yes | Yes | Yes |
| HP LaserJet MFP E7755 | 25.10.103.121 | Yes | Yes | Yes | Yes | Yes |
| HP LaserJet MFP E7755 | 25.10.103.122 | Yes | Yes | Yes | Yes | Yes |
| HP LaserJet MFP E7755 | 25.10.103.123 | Yes | Yes | Yes | Yes | Yes |
| HP LaserJet MFP E7755 | 25.10.103.124 | Yes | Yes | Yes | Yes | Yes |
| HP LaserJet MFP E7755 | 25.10.103.125 | Yes | Yes | Yes | Yes | Yes |

Paper Details Report

| Display Name | IP Address | License Version | Processor Features | Processor Capacity | Processor Utilization | Temp in Range |
|-----------------------|---------------|-----------------|--------------------|--------------------|-----------------------|---------------|
| HP LaserJet MFP E7755 | 25.10.103.104 | Yes | Yes | Yes | Yes | Yes |
| HP LaserJet MFP E7755 | 25.10.103.105 | Yes | Yes | Yes | Yes | Yes |
| HP LaserJet MFP E7755 | 25.10.103.106 | Yes | Yes | Yes | Yes | Yes |
| HP LaserJet MFP E7755 | 25.10.103.107 | Yes | Yes | Yes | Yes | Yes |
| HP LaserJet MFP E7755 | 25.10.103.108 | Yes | Yes | Yes | Yes | Yes |
| HP LaserJet MFP E7755 | 25.10.103.109 | Yes | Yes | Yes | Yes | Yes |
| HP LaserJet MFP E7755 | 25.10.103.110 | Yes | Yes | Yes | Yes | Yes |
| HP LaserJet MFP E7755 | 25.10.103.111 | Yes | Yes | Yes | Yes | Yes |
| HP LaserJet MFP E7755 | 25.10.103.112 | Yes | Yes | Yes | Yes | Yes |
| HP LaserJet MFP E7755 | 25.10.103.113 | Yes | Yes | Yes | Yes | Yes |
| HP LaserJet MFP E7755 | 25.10.103.114 | Yes | Yes | Yes | Yes | Yes |
| HP LaserJet MFP E7755 | 25.10.103.115 | Yes | Yes | Yes | Yes | Yes |
| HP LaserJet MFP E7755 | 25.10.103.116 | Yes | Yes | Yes | Yes | Yes |
| HP LaserJet MFP E7755 | 25.10.103.117 | Yes | Yes | Yes | Yes | Yes |
| HP LaserJet MFP E7755 | 25.10.103.118 | Yes | Yes | Yes | Yes | Yes |
| HP LaserJet MFP E7755 | 25.10.103.119 | Yes | Yes | Yes | Yes | Yes |
| HP LaserJet MFP E7755 | 25.10.103.120 | Yes | Yes | Yes | Yes | Yes |
| HP LaserJet MFP E7755 | 25.10.103.121 | Yes | Yes | Yes | Yes | Yes |
| HP LaserJet MFP E7755 | 25.10.103.122 | Yes | Yes | Yes | Yes | Yes |
| HP LaserJet MFP E7755 | 25.10.103.123 | Yes | Yes | Yes | Yes | Yes |
| HP LaserJet MFP E7755 | 25.10.103.124 | Yes | Yes | Yes | Yes | Yes |
| HP LaserJet MFP E7755 | 25.10.103.125 | Yes | Yes | Yes | Yes | Yes |

Notes

last1 - 7/28/2015 (1/28/2011 - 7/28/2011)

last1 - 7/28/2011=accoltestHPNJA@HPNJA>

Page 82

How does it work?

HP EcoSMART Fleet collects data from one or more instances of HP Web Jetadmin and its associated database. It also integrates with the HP Carbon Footprint Calculator to provide carbon, paper, energy, and money savings estimates. The combined data is then converted into environmental metrics and presented to the user in an intuitive interface. From this interface you can run reports to see current status and the effect of settings and device changes.

Because HP EcoSMART Fleet relies on information collected by HP Web Jetadmin, imaging and printing administrators should examine their data collection policies to ensure that the appropriate data is collected to enable optimal results from HP EcoSMART Fleet.

NOTE Money savings are based on a variety of factors, including energy costs in your location(s). Precise estimates may not be available for all customers in all countries/regions.

Track usage to locate savings and see your carbon footprint

Get detailed status and trending reports on a variety of energy and carbon information, including:

- **Time spent** in Print, Ready, Sleep, and Off modes
- **Energy consumed** for each device
- **Number of pages** printed

Optimize for your business

Run scenarios that estimate the effect of changing the following settings:

- **Sleep and auto-off times** ensure devices conserve power when not in use, such as after hours
- **Sleep and auto-off delay** determines the amount of time the device is inactive before it goes into sleep or off mode
- **Auto-on triggers** power on the device at the following events:
 - USB job
 - Network (wired or wireless) job
 - Control panel touch
 - Fax job
 - Paper in ADF
 - Memory device insertion
 - Open tray

- **Wake and auto-on times** ensure devices are ready for work when your employees are
- **Activation days** control what days of the week the device automatically powers on
- **Two-sided printing** cuts paper usage up to 50% and virtually doubles a device's input capacity
- **Digital sending** enables advanced workflows and can save paper

HP EcoSMART suite

HP EcoSMART Fleet is part of a suite of new HP EcoSMART tools that provide environmental imaging and printing information to users at every level. HP also offers:

HP EcoSMART Console—Available from the device's embedded web server (EWS), this tool will provide control over a wide variety of settings that impact energy and paper use.

Start now

Start making your print experience good for the office and good for the planet! Visit www.hp.com/go/esf for more information.

Technical specifications

SUPPORTED OPERATING SYSTEMS Windows® Server 2008 R2 x64, Windows Server 2003 x32 and x64 (SP2 and above), Windows Server 2008 x32 and x64, Windows 7 x32 and x64

SUPPORTED BROWSERS Microsoft® Internet Explorer 7.0 or greater, Firefox 3.0 or greater

REQUIREMENTS HP Web Jetadmin 10.2 SR 6 or later. 20 MB of available disk space (HP EcoSMART Fleet only), .NET Framework 4.0, IIS 5.1 or higher, 2.4 GHz processor and 3 GB RAM. Database size is dependent on number of devices and data collection frequency (daily, monthly, quarterly, etc.). 64-bit operating systems, faster processing, and more memory are recommended for fleets of over 10K devices. Requires separate SQL Server or SQL Express 2005 or 2008 or higher license (not provided by HP). Refer to the HP EcoSMART Fleet Installation Guide for additional installation requirements.

SUPPORT AND MAINTENANCE One year or three year HP CarePacks

Ordering information

| | |
|---|----------|
| HP EcoSMART Fleet 1-500 devices | CZ205AAE |
| HP EcoSMART Fleet 501-5,000 devices | CZ206AAE |
| HP EcoSMART Fleet more than 5,000 devices | CZ207AAE |

| | |
|--|--------|
| 1-500 device HP CarePack, 1 year | HZ637E |
| 501-5,000 device HP CarePack, 1 year | HZ638E |
| More than 5,000 device HP CarePack, 1 year | HZ639E |
| 1-500 device HP CarePack, 3 year | HZ662E |
| 501-5,000 device HP CarePack, 3 year | HZ663E |
| More than 5,000 device HP CarePack, 3 year | HZ664E |

© Copyright 2011, 2012 Hewlett-Packard Development Company, L.P.

The information contained herein is subject to change without notice. The only warranties for HP products and services are set forth in the express warranty statements accompanying such products and services. Nothing herein should be construed as constituting an additional warranty. HP shall not be liable for technical or editorial errors or omissions contained herein.

Microsoft and Windows are registered trademarks of Microsoft Corporation.

